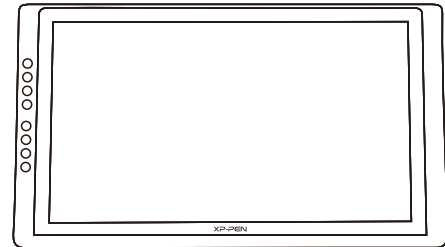




Graphic Pen Display

Artist 16Pro Manual

Windows 10,8,7 and Mac 10.8 or above



XP-PEN

Website: www.xp-pen.com

Mail: service@xp-pen.com


Please contact us with any questions





Artist 16Pro User Manual

Safety Precautions

This manual uses the following symbols to ensure that the XP-PEN Tablet is used correctly and safely. Be sure to read and observe the Safety Precautions.

 **Do not use this product in a control system area that requires a high degree of safety and reliability.**
In such a system, this product could negatively affect other electronic devices and could malfunction due to the effect of those devices.


 **Turn the power off in areas where use of electronic devices is prohibited.**
Turn the power off your tablet when onboard an aircraft or in any other location where use of electronic devices is prohibited, otherwise it may negatively affect other electronic devices in the area.
Unplug the USB connector from this product and turn the power off.


 **Keep the product away from infants and young children.**
Accessories to this gadget may present a choking hazard to small children. Keep all accessories away from infants and young children.


CAUTION


Do not place this product on unstable surfaces.
Avoid placing this product on unstable, tilted surfaces or any locations exposed to excessive vibrations. This may cause the tablet to fall or impact surfaces which can result in damage and/or malfunction to the tablet.

Do not place heavy objects on top of this product.
Do not place heavy objects on the product. Do not step on, or place your body weight on this product as this may cause damage.


 **Avoid extreme high or low-temperature exposure to the XP-Pen tablet.**
Do not store this product in areas that drop below 5°C or above 40°C. Avoid locations with excessive temperature fluctuations. This may result in damage to the product and its components.


 **Do not disassemble**
Do not disassemble or modify this product. Doing so may expose you to heat, fire, electric shock and injury. Disassembling the product will void your warranty.


 **Do not use alcohol for cleaning**
Never use alcohol, thinner, benzene or other mineral solvents that may discolor and cause deterioration to the product.

 **Do not expose to water**
Be cautious of water and all liquids that may be near the tablet. Exposure to water or liquid could damage the product.

CAUTION

 **Avoid placing metallic objects and especially magnetic objects on the tablet.**
Placing metallic and/or magnetic objects on this product during operation may cause malfunction or permanent damage.

 **Do not strike the pen against hard objects.**
Striking the pen against hard objects can cause damage to the pen.

 **Avoid gripping the pen too tightly, and DO NOT use excessive weight/pressure on the Express Key button and pen.**
The stylus pen is a high-precision instrument. Avoid pressing too tightly on the Express Key button, and keep any objects from covering the pen to avoid potential damage. Keep the pen away from areas of high dust, contaminants, or any particulate matter that can affect or damage the pen.

Limitation of Liability

- XP-Pen shall in no event be liable for damages resulting from fires or earthquakes, including those caused by third parties and those arising from user misuse, abuse or neglect.
- XP-Pen shall in no event be liable for incidental damages- including but not limited to loss of business income, interruption of business activities, corruption or loss of data – that arise from use or failure to use this product correctly.
- XP-Pen shall in no event be liable for damage resulting from uses not documented in this manual.
- XP-Pen shall in no event be liable for damages or malfunction arising from the connection to other devices or use of third party software.

Artist 16Pro User Manual

Thank you for purchasing the XP-Pen tablet. Our product user manual currently supports English, Russian, Japanese, German, Korean, Chinese, Italian, Spanish, and French. We apologize if your preferred language is not supported.

Contents

- I. Product Overview** 2
 - Overview..... 2
 - Active area..... 2
- II. Stylus**..... 3
 - Overview..... 3
 - Pen Case, Pen stand, Pen tip, and Pen clip hole..... 3
- III. Connecting the Artist 16Pro**..... 5
- IV. Driver Installation**..... 5
 - Windows..... 5
 - Mac..... 7
- V. Driver Settings UI**..... 10
 - Windows..... 10
 - Mac..... 14
- VI. Driver Uninstallation**..... 17
 - Windows..... 17
 - Mac..... 18
- VII. FAQ**..... 18

{ I.Product Overview }

Overview



Image 1-1: Overview

- (1). Display/Working area
- (2). Express keys
- (3). USB port
- (4). Power jack
- (5). HDMI port
- (6). Stand adjustment lever
- (7). Stand
- (8). Power button
 - a. On/green: The Artist16 Pro is connected to your computer and powered on.
 - b. On/red: The Artist16 Pro is powered on, but not connected to a computer.
 - c. Off: The Artist16 Pro is powered off.
- (9). Menu/Exit button
- (10). Return button
- (11). + /Move right button
- (12). - / Move left button

Active area

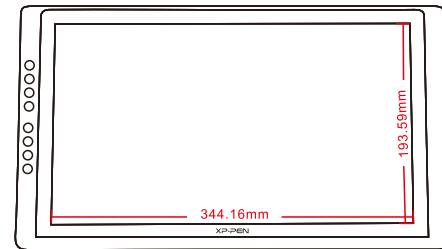


Image 1-2: Active area

{ II. Stylus }

Overview

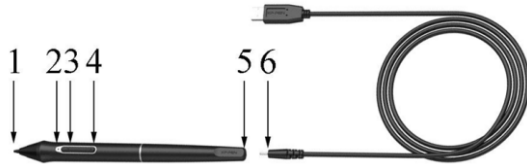


Image 2-1: Stylus

- (1) Pen tip
- (2) Power indicator
 - a. On/red: Low battery.
 - b. On/green: Battery is charging.
 - c. Off: Battery is fully charged.
- (3) Barrel button 2
- (4) Barrel button 1
- (5) Charger port
- (6) Charger USB cable

NOTES:

Barrel button functions can be customized in the tablet's driver settings.

Pen Case, Pen stand, Pen tip, and Pen clip hole

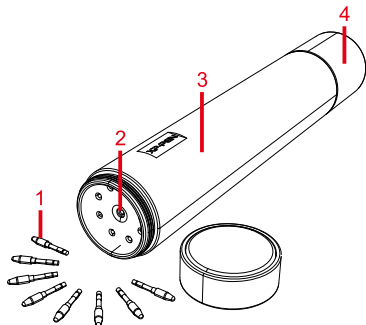


Image 2-2: Pen Case, Pen stand, Pen tip and Pen clip hole

- (1) Pen tip
- (2) Pen clip hole
- (3) Pen case
- (4) Pen stand

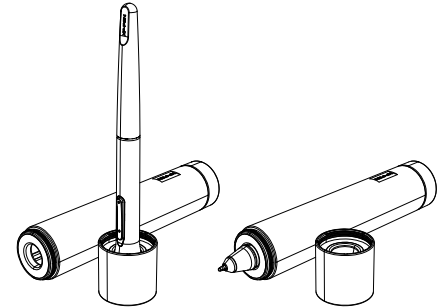


Image 2-3: Pen stand

Pen tip replacement

- (1) Twist the pen stand top cover counterclockwise to separate it from the pen stand. Insert the stylus tip into the hole in its center. Tilt the stylus slightly so that the tip catches on the edge of the hole, then pull the stylus and pen stand apart to remove the pen tip.
- (2) Take a new pen tip from the inside of the pen stand.
- (3) Push the new pen tip straight into the stylus.

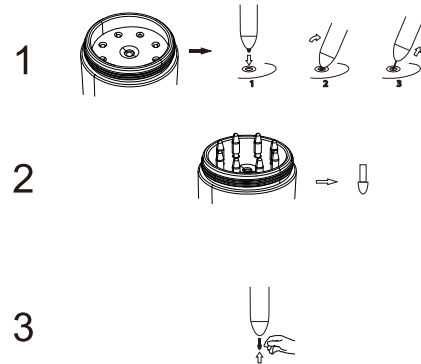


Image 2-4: Pen tip replacement

{ III.Connecting the Artist 16Pro }

1. Connect the Artist 16Pro to your computer via the included USB cord.
2. Connect the Artist 16Pro's power cord. Plug the cord into the included adapter, then into a wall outlet.
3. Connect the Artist 16Pro to your computer via the included HDMI cord.

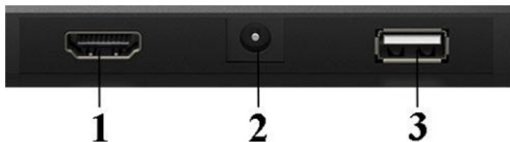


Image 3-1: Artist16 Pro ports (1.HDMI; 2.Power jack; 3.USB)

{ IV.Driver Installation }

Supported operating systems:

Windows 10, 8, or 7
Mac OS X 10.8 or above

NOTES:

- (1) Disable any antivirus or firewall software and close any non-essential background software before beginning the installation. Some software, such as OneDrive and Dropbox, may monopolize important files and prevent a successful installation. On Windows computers, check the system tray on the bottom-right of the screen and close any software unrelated to your computer hardware.
- (2) Uninstall any existing tablet software before attempting to install the Artist16 Pro driver. Other tablet drivers will conflict with the Artist 16Pro driver or prevent installation entirely.
- (3) You can download the latest driver version from the XP-Pen website (www.xp-pen.com). If you choose to download the driver from the website, be sure to extract the .zip file contents before running ".exe" or ".pkg."

Windows

- (1) Connect the Artist 16Pro to your computer using the included HDMI, USB & Power cords. Turn on the tablet.
- (2) Please download the Artist 16Pro latest driver from the support section of our website, www.xp-pen.com
- (3) Extract the ".zip" file contents before running ".exe".
- (4) After a successful installation, the driver's icon (XP-PEN) will appear in your system tray and on your desktop. If the icon is not present, uninstall the driver, reboot, and repeat step 2.
- (5) (Recommended) Open [Control Panel] > [Display], then set Change the size of text, apps, and other items to 100%.

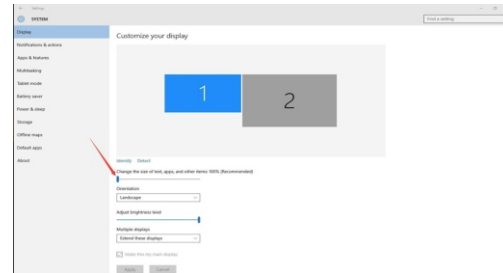


Image 4-1: Display setting

- (6) In [Control Panel] > [Display], change your dual monitor settings to Extend mode/Extend these displays.
- (7) In Extend mode, set your Artist16 Pro to monitor 2 and choose a resolution of 1920x1080.
- (8) In Duplicate these displays mode, set both of your monitors' resolutions to 1920x1080.

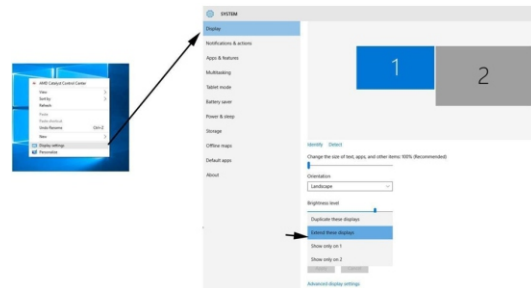


Image 4-2: Extend mode

- (9) Apply and exit.
- (10) Double-click the driver's system tray icon to open your tablet settings, then set your Artist 16Pro to Monitor 2 on "Current screen." Apply and exit.

Note:

To use Paint Tool Sai (SAI) with the Artist 16Pro, please open your computer's Display setting and set "Size of text, apps, etc" to 100%.

Mac

- (1) Connect the Artist 16Pro to your computer using the included HDMI, USB & Power cords. Turn on the tablet.
- (2) Please download the Artist 16Pro latest driver from the support section of our website, www.xp-pen.com
- (3) Extract the ".zip" file contents before running ".pkg".

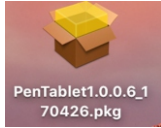


Image 4-3: Mac driver

- (4) If you run into the error message below, please complete the following steps.

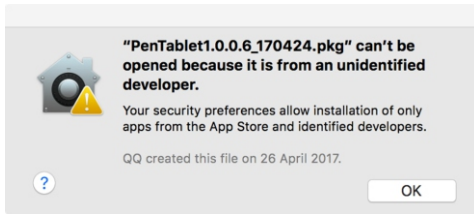


Image 4-4: Unidentified developer

- a. Open "System Preferences," then "Security & Privacy."

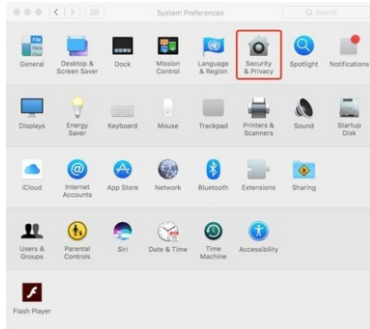


Image 4-5: Security & Privacy

- b. Click "Open Anyway" button.

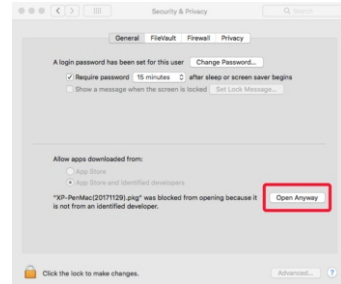


Image 4-6: Open Anyway

- c. Input your username and password, then click "Unlock."



Image 4-7: Password

- (5) Open [System Preferences] > [Display]. In the Display tab, set your resolution to Default for display.



Image 4-8: Display

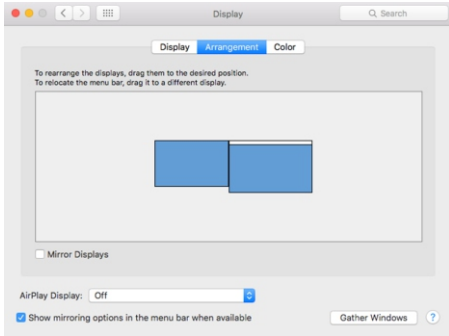


Image 4-9: Arrangement

- (6) In the Arrangement tab, you may choose to Mirror Displays. With Mirror Displays enabled, both monitors' resolutions should be set to 1920x1080.
 - (6.1) Open [Finder] > [Applications] > [Touch Tablet] > [Pen Tablet Setting].
 - (6.2) In the Monitor tab, set Monitor Mapping to Color LCD.
- (7) With Mirror Displays disabled, set your Artist 16Pro's resolution to 1920x1080.
 - (7.1) Open [Finder] > [Applications] > [Touch Tablet] > [Pen Tablet Setting].
 - (7.2) In the monitor tab, set Monitor Mapping to RTK.

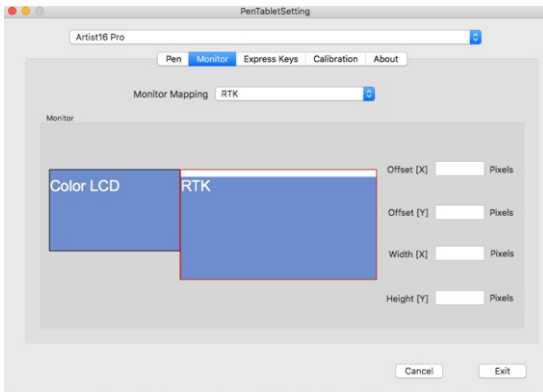


Image 4-10: Monitor

{ V.Driver Settings UI }

Notes:

- (a). The Artist 16Pro's express keys are designed to work with US English keyboards. Keys may not function correctly with the other keyboard languages.
- (b). By default, the Artist 16Pro express keys are mapped to standard Photoshop keyboard shortcuts. Keys can be customized to function efficiently in other software.

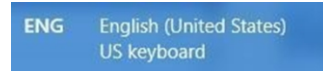



Image 5-1. Keyboard

Windows

The Artist 16Pro's driver settings can be opened in two ways:
 Double-click the driver's icon () in system tray or your desktop.

Driver UI

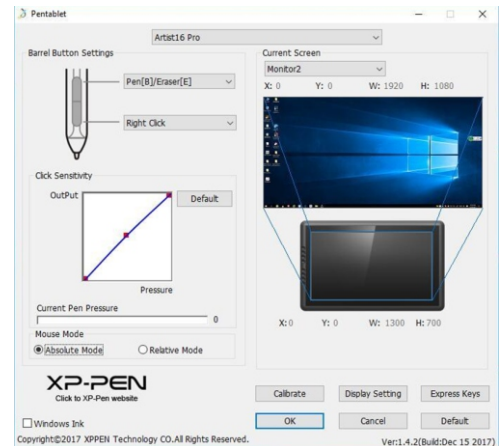


Image5-2: UI

1.1. Barrel Button Settings

You may customize the functions of your tablet pen's barrel buttons here. Use the "Function Key" option to program custom keystrokes.

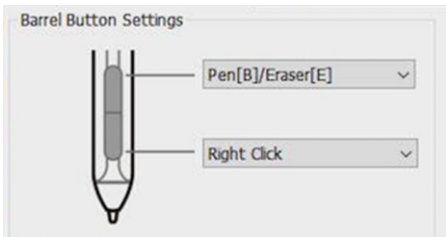


Image5-3: Pen Functions Setting

Note:

Pen/Eraser Toggle

With the stylus in range of the Artist 16Pro's working area, press the assigned barrel button to toggle between pen and eraser modes in compatible drawing software. The current mode will briefly be displayed on your monitor.

1.2. Click Sensitivity & Current Pen Pressure

You can adjust pen pressure to "Output" or "Press" sensitivity on here.

Current Pen Pressure shows the current pressure level being exerted on your tablet and can be used to test pen pressure.

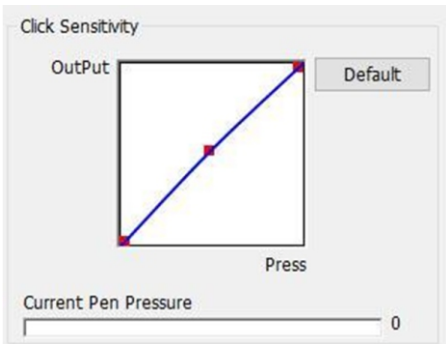


Image 5-4: Click Sensitivity & Current Pen Pressure

1.3. Mouse Mode

Absolute (Pen) Mode: Standard tablet mode; Each point of the tablet's work area corresponds to an absolute point on your computer display.

Relative (Mouse) Mode: Mouse mode; The tablet's work area does not correspond to absolute points on your computer display and your pen works as a standard mouse.

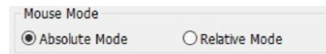


Image 5-5: Mouse Mode

1.4. Current Screen

The Artist 16Pro may be configured for use with monitor1 or monitor2.



Image5-6: Current Screen

1.5. Windows Ink

Windows Ink capability can be toggled on and off here. Enabling this will allow support for Windows Ink and applications that run using Windows Ink.



Image5-7: Windows Ink

1.6. Calibration

The *Calibration* tab allows you to set up calibration for your tablet.

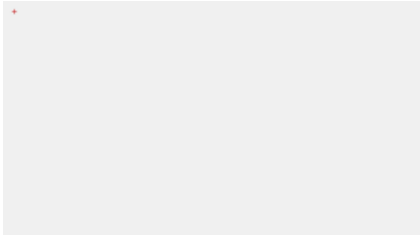


Image 5-8: Calibration

1.7. Display Setting

- a. Color Temperature: Use to adjust the Artist 16Pro's color balance.
- b. User: to adjust red, green and blue color levels on the Artist 16Pro's display. Brightness and contrast can also be adjusted here.
- c. Rotate: You may rotate the Artist 16Pro's display in this tab.

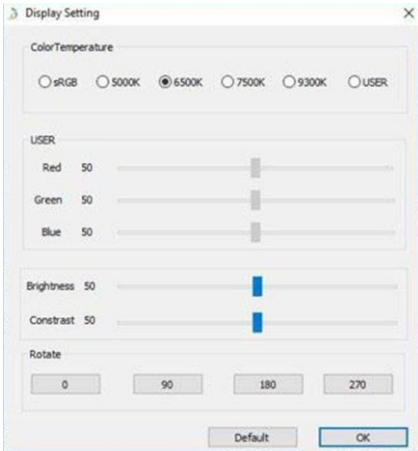


Image 5-9: Display Setting

1.8. Express Keys Setting

In this tab, you may edit the functions of the Artist 16Pro's shortcut keys. Use the "Definition" option to program custom keystrokes. Disable express keys: When you enable it, all of the express keys function will be disabled. Hide Hints: When you enable it, and click any express keys the message will not popup on the bottom of screen.

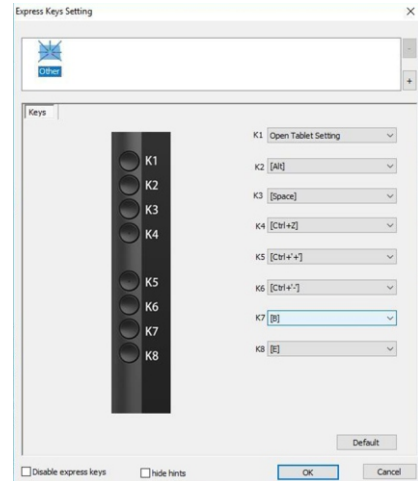


Image5-10: Keys

1.9. XP-Pen Logo

If a driver update is available, you will see a blue arrow here (↕). Click the arrow to update your driver.

Click our logo to visit our website.



Image 5-11: XP-Pen logo

Mac

To open the Artist 16Pro's driver settings, open Finder > Applications > PenTabletSetting.

Driver UI



Image5-12: Tablet Setting

1.1. Pen

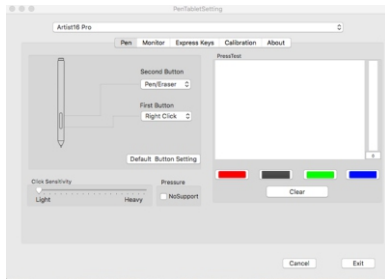


Image5-13: Mac UI

In this tab, you may customize the functions of your stylus' barrel buttons, adjust pressure sensitivity, and test your pen pressure. Pressure No Support function can disable pen pressure when drawing. Click "Default Button Setting" to revert to manufacturer settings.

Note:
Pen/Eraser Toggle

With the stylus in range of the Artist 16Pro's working area, press the assigned barrel button to toggle between pen and eraser modes in compatible drawing software. The current mode will briefly be displayed on your monitor.

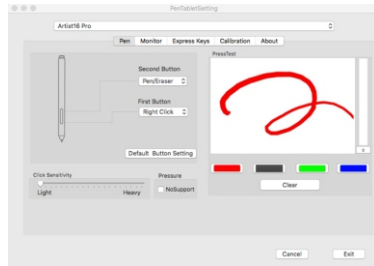


Image5-14: Pressure Test

1.2. Monitor

The "Monitor" tab allows you to configure your tablet for use monitor1 or monitor2.

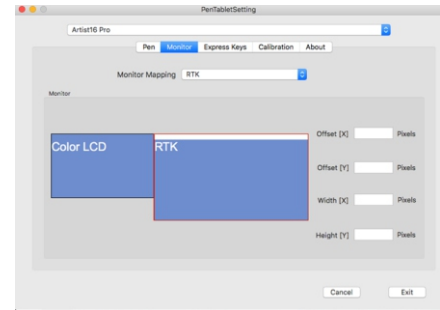


Image5-15: Monitor

1.3. Express Keys

In the Express Keys tab, you may choose your preferred functions for the Artist 16Pro's shortcut keys. Use the "Reset Customer Defined" option to program custom keystrokes.

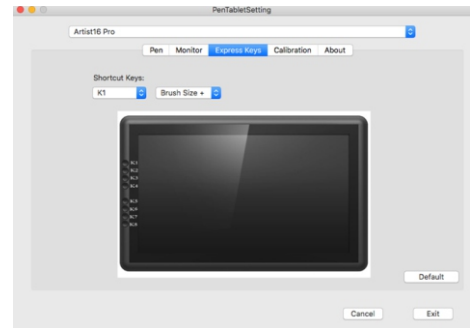


Image5-16: Express Keys

1.4. Calibration

The Calibration tab allows you to calibrate your tablet or rotate your display. To calibrate, click Calibration and follow the on-screen instructions.

Rotate: You may rotate the Artist 16Pro's display in this tab.

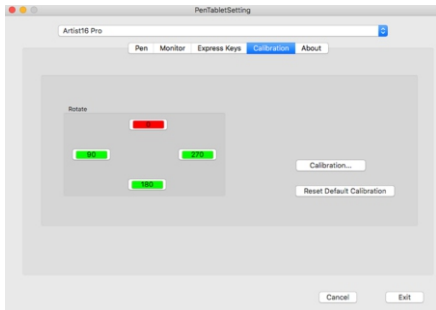


Image5-17: Calibration

1.5. About

This tab displays the current version of your driver software.

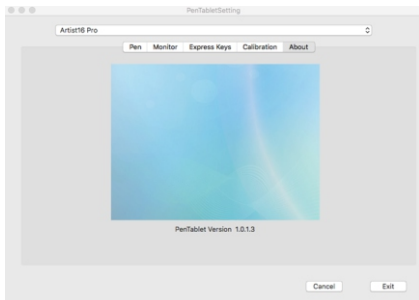


Image5-18: About

{ VI.Driver Uninstallment }

Windows

In the Start menu, open [Settings] → [Apps & features]. Find “Pentablet” and click “Uninstall.” Follow the on-screen instructions.

Mac

Open [Finder]→ [Application]→ [Pen Tablet], then click “Uninstall Pen Tablet” and follow the on-screen instructions.

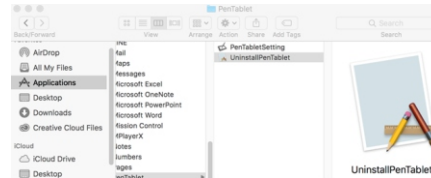


Image 6-1: Mac uninstall

NOTE :

When attempting to reinstall the Artist 16Pro driver, be sure to reboot your computer after the uninstall is complete.

{ VI.FAQ }


1. Where can I download the latest Artist16 Pro driver?

- a. Latest driver releases can be downloaded from our website (www.xp-pen.com).

2. I can't use the stylus to control the cursor.

- a. Please turn on your Artist 16Pro and make sure you can see the display.
- b. Please install the driver again then find the tablet icon in the system tray and desktop.
- c. Open it then test the pen pressure gauge inside
- d. If you can't test the pen pressure, please uninstall the driver and reboot. Make sure your computer login account has Administrator authority.
- e. The Artist 16Pro supports plug and play, please test your stylus pens function before reinstalling the driver. If you have control, please disable your antivirus then go to the XP-Pen website to download the latest driver.
- g. When the download is complete, please unzip and extract the contents of the folder to run the .exe or .pkg installation file.
- h. Open the tablet setting again then make sure can you use the pen pressure on it

3. How do I know that the Artist16 Pro driver installed successfully?

- a. After installing the driver, the Artist 16Pro's driver icon  should be visible in your system tray on the bottom-right of your screen (Windows OS) and desktop. Pen input will control the cursor and pressure sensitivity will be functional in the driver.

4. Why can't I use the pen pressure on the drawing software?

- a. Please make sure the drawing software can support pen pressure
- b. Make sure you have the latest driver installed.
- c. Open the tablet setting and make sure you can test the pen pressure in it
- d. Enable the “windows ink” function then click the ok button to exit. Open the drawing software again and test your pen pressure.
- e. Please note our tablets do not come with drawing software.

If you have any questions, please contact us at:
Skype: XP-Pen
Web: www.xp-pen.com
Email: service@xp-pen.com